

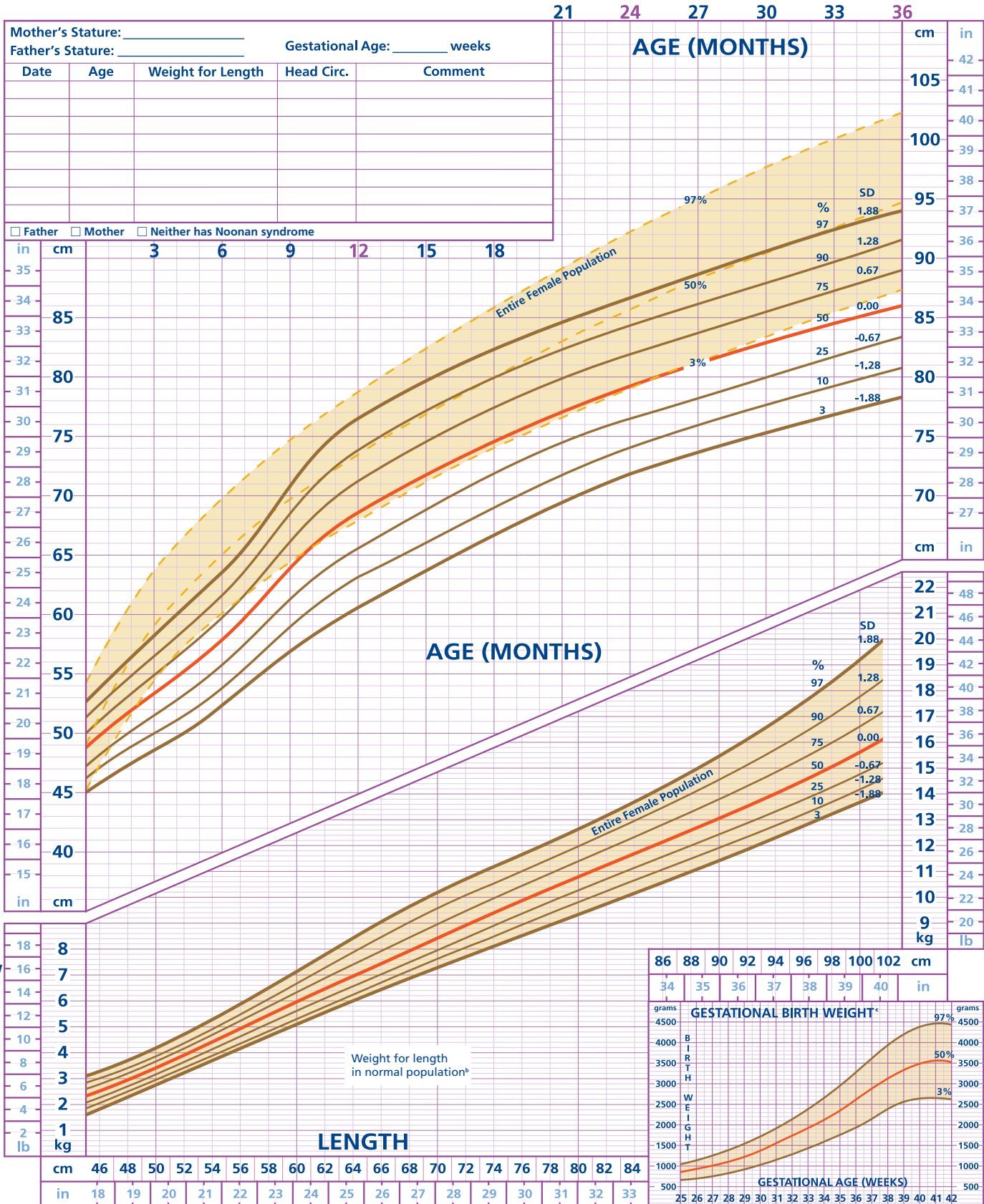
# NOONAN SYNDROME GIRLS

Birth to 36 Months

Length for Age and Weight for Length<sup>a,b</sup>

Name: \_\_\_\_\_

DOB: \_\_\_\_\_ ID: \_\_\_\_\_



<sup>a</sup>Chart and curve selection by Susan Rose, MD, Cincinnati Children's Hospital, University of Cincinnati.  
<sup>b</sup>There is no known reference for weight/length ratios in children with Noonan syndrome.  
<sup>c</sup>Gestational birth weight data for patients with Noonan syndrome do not differ from those of the normal population.

Charts created with data from: Ranke, et al. *Eur J Pediatr*. 1988;148(3):220-227. Usher, et al. *J Pediatr*. 1969;74(6): 901-910. Witt, et al. *Clin Genet*. 1986;30:150-153.

Plot points taken from data available at: <http://www.cdc.gov/nchs/data/nhanes/growthcharts/zscore/lenageinf.xls> and <http://www.cdc.gov/nchs/data/nhanes/growthcharts/zscore/wtlenmf.xls>.

Novo Nordisk Inc.  
 100 College Road West  
 Princeton, New Jersey 08540 U.S.A.  
 © 2007 Novo Nordisk Inc.  
 132541C June 2007 Printed in the U.S.A.

% = population percentile  
 SD = standard deviation

